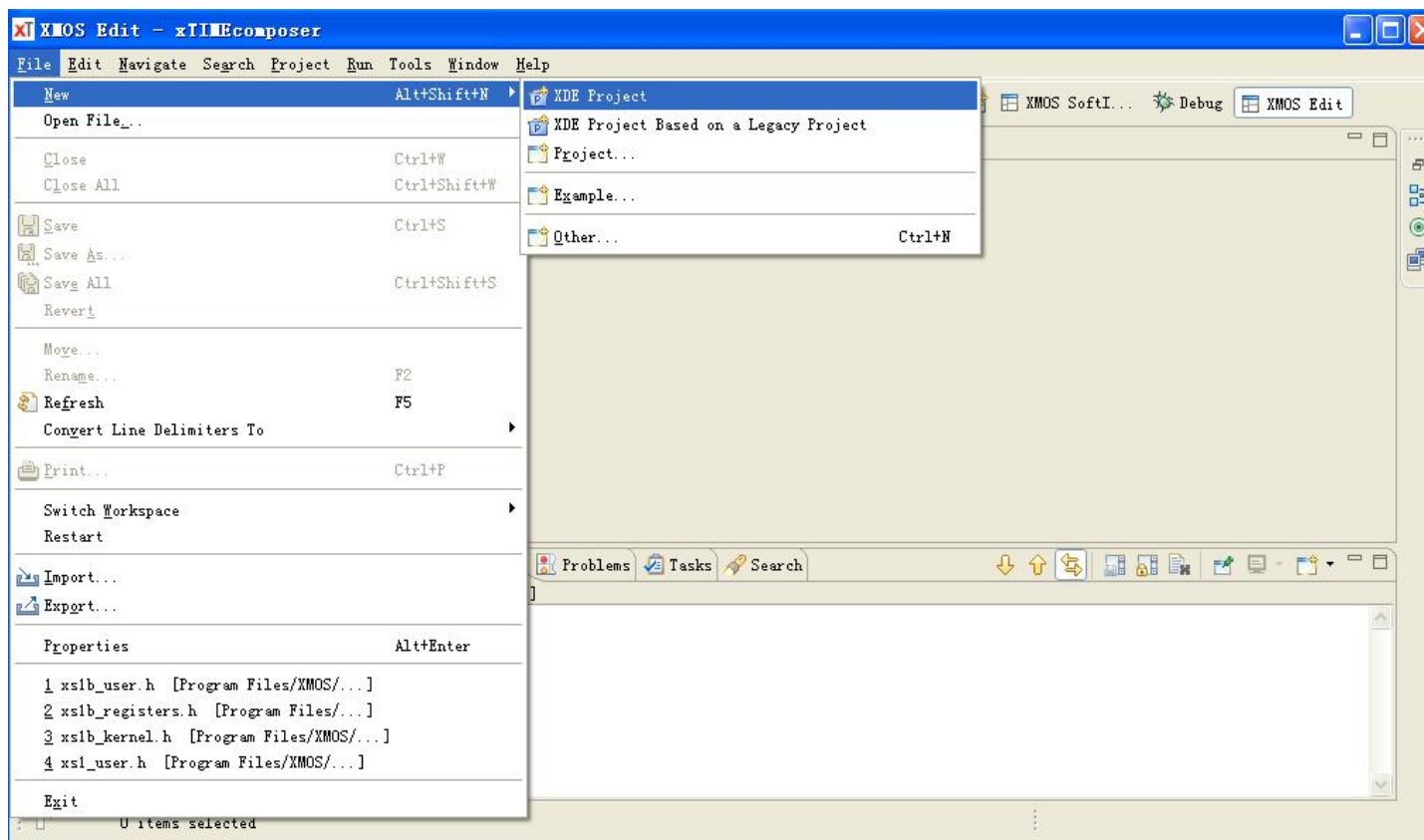


xTIME composer studio—GUI

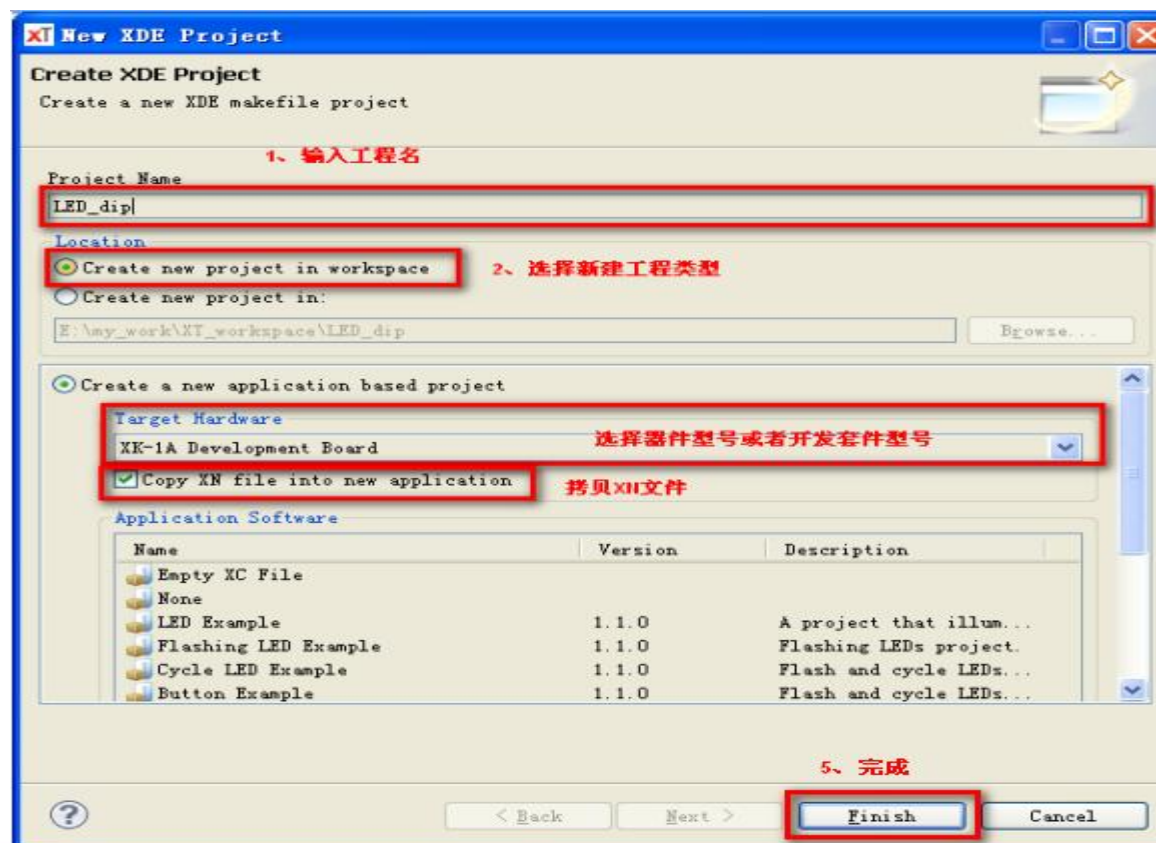
1、新建工程

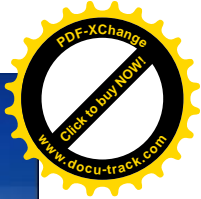




xTIME composer studio—GUI

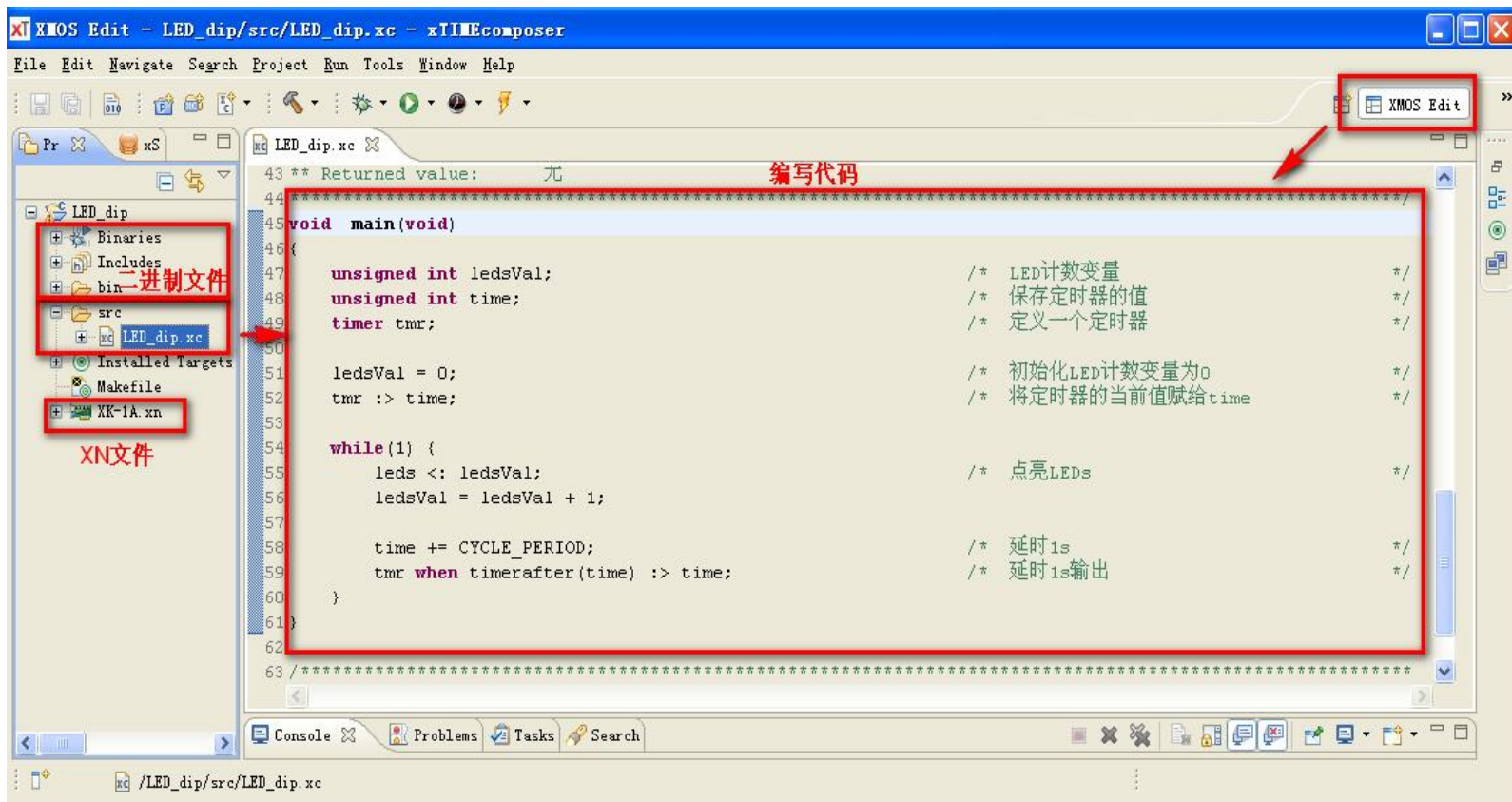
2、工程配置

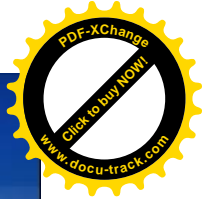




xTIME composer studio—GUI

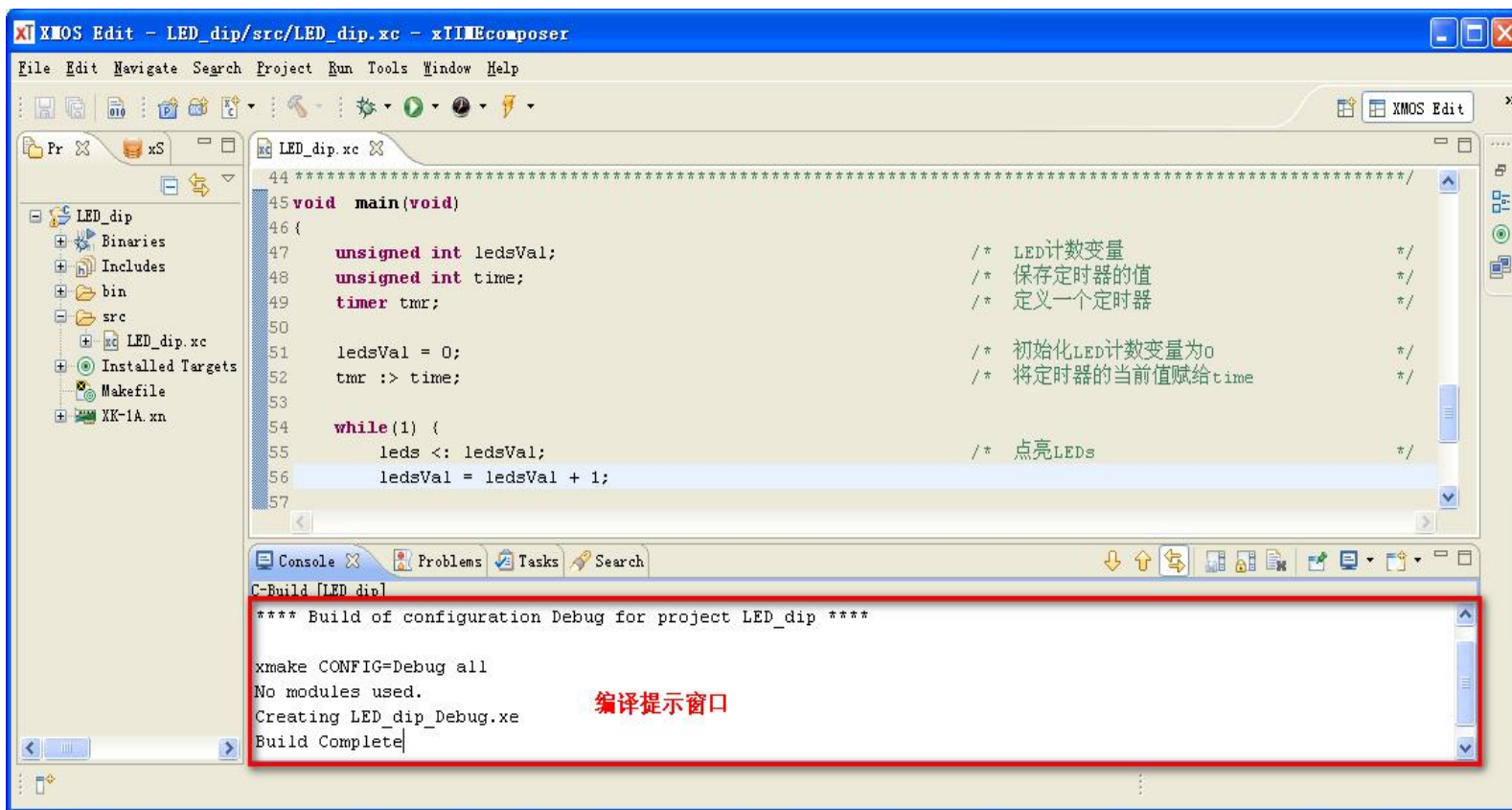
3、编写代码

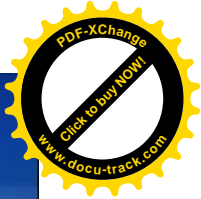




xTIME composer studio—GUI

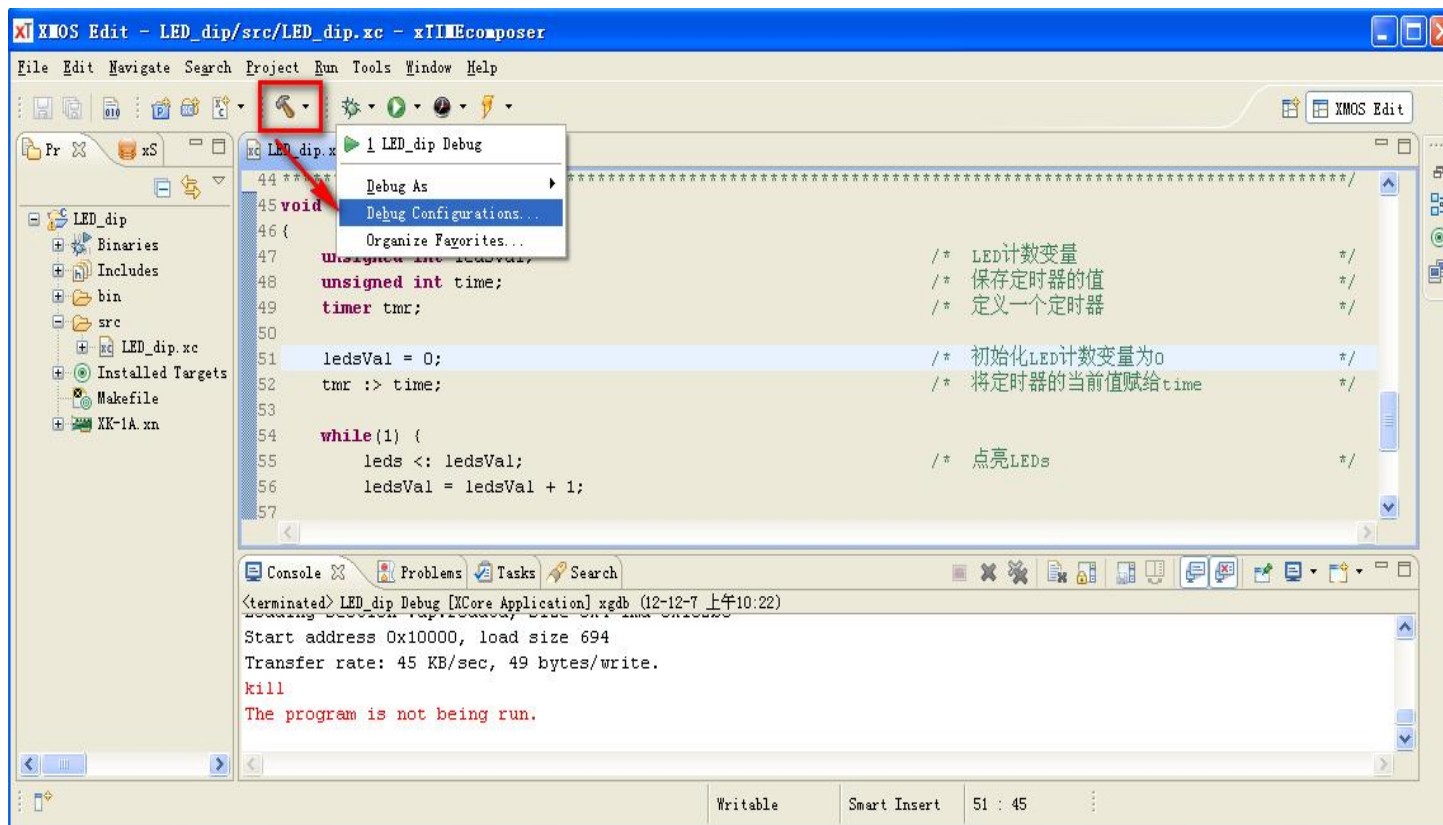
4、调试

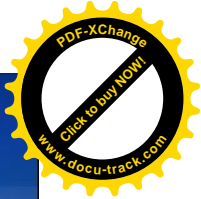
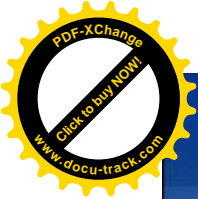




xTIME composer studio—GUI

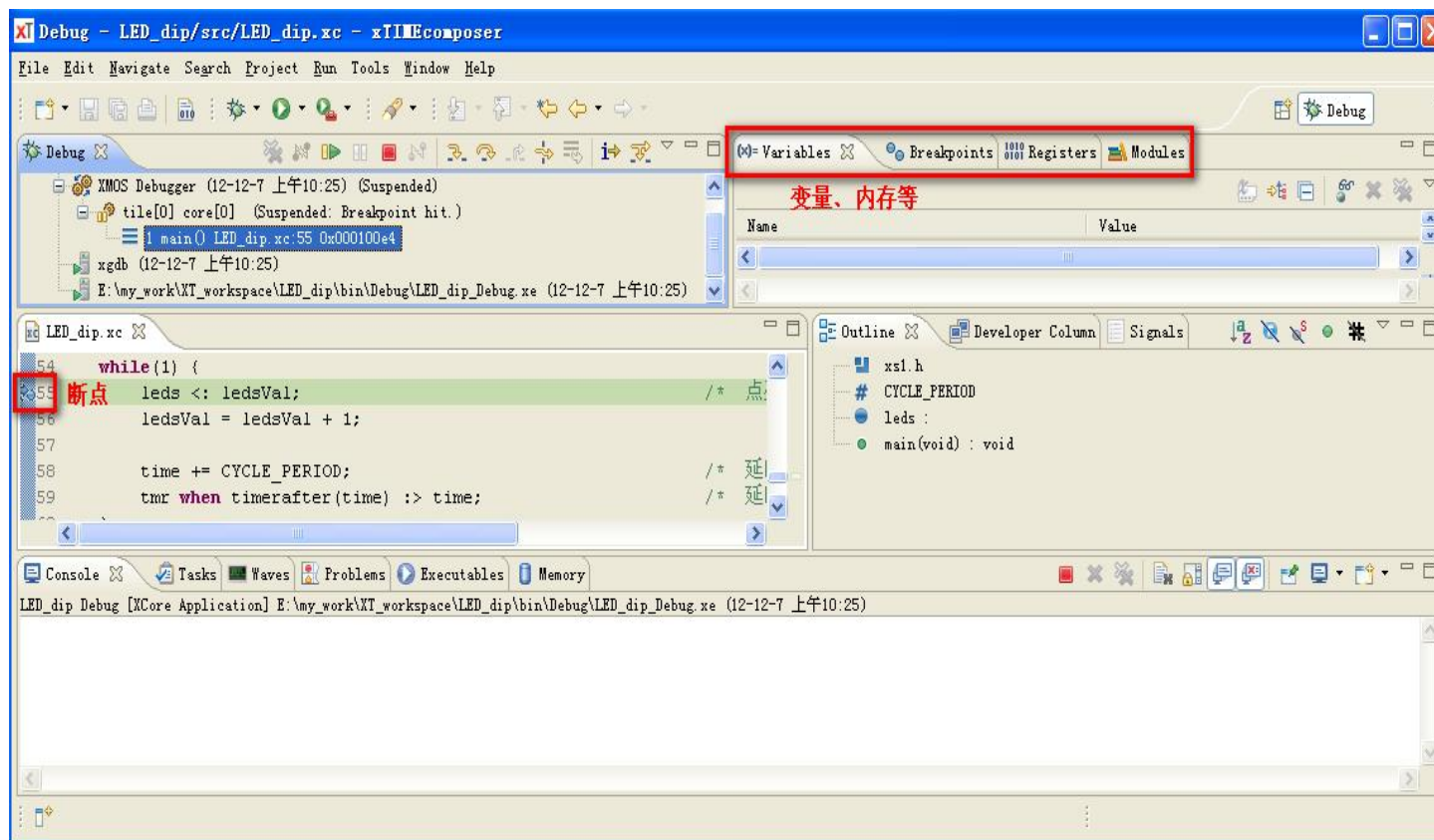
5、仿真





xTIME composer studio—GUI

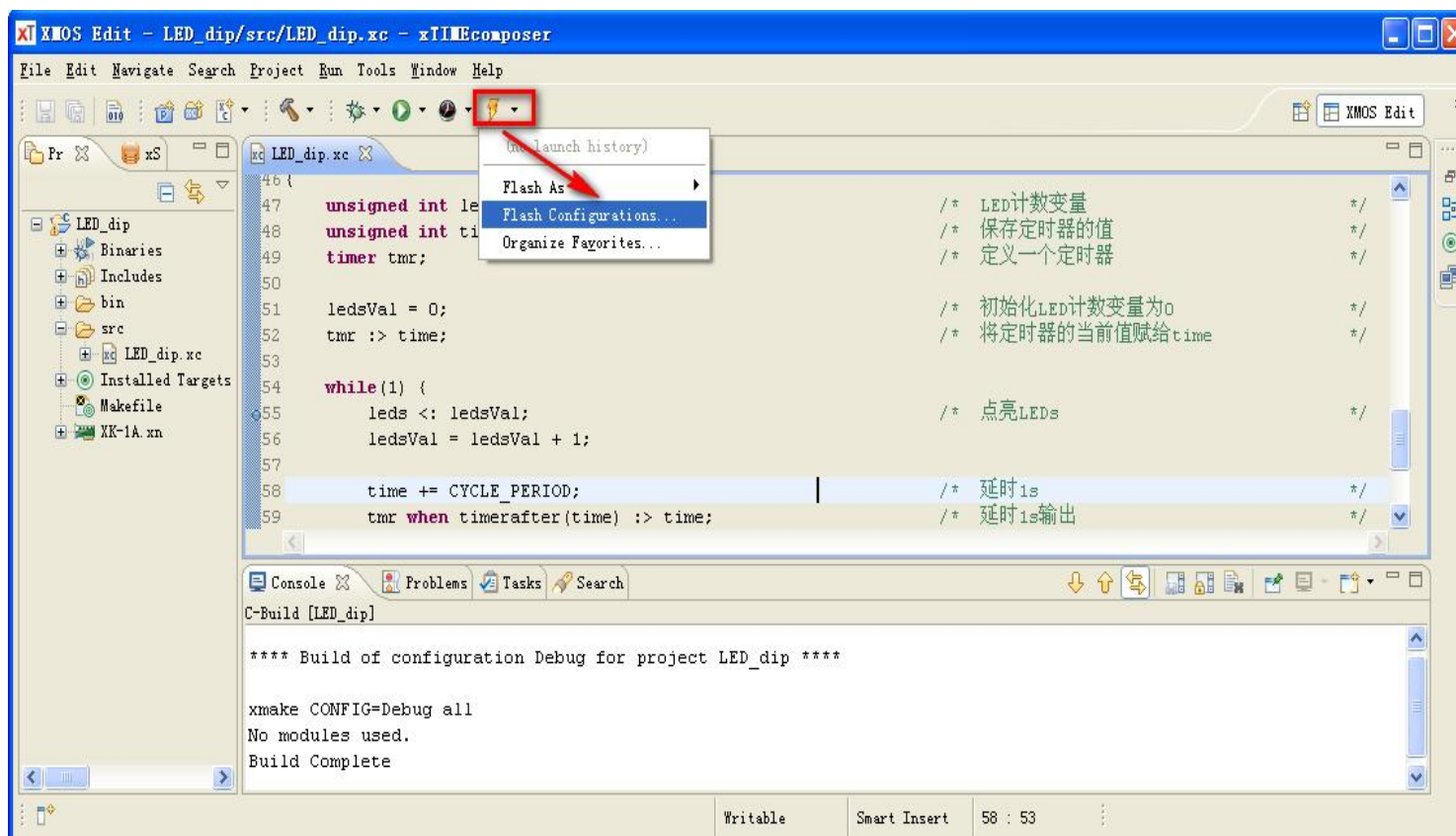
6、单步调试

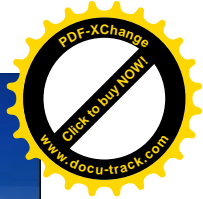




xTIME composer studio—GUI

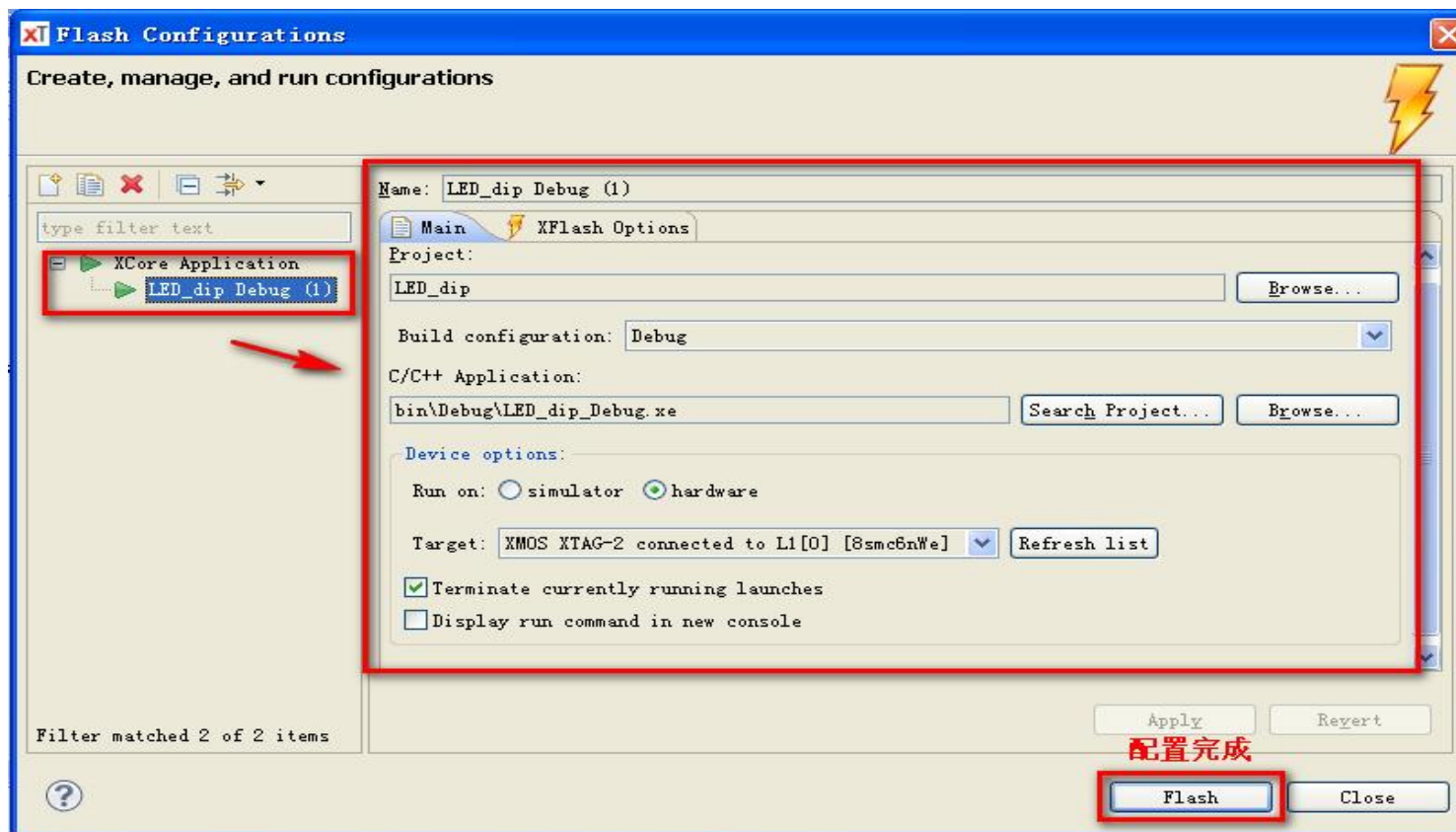
7、下载

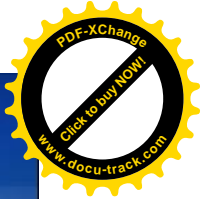




xTIME composer studio—GUI

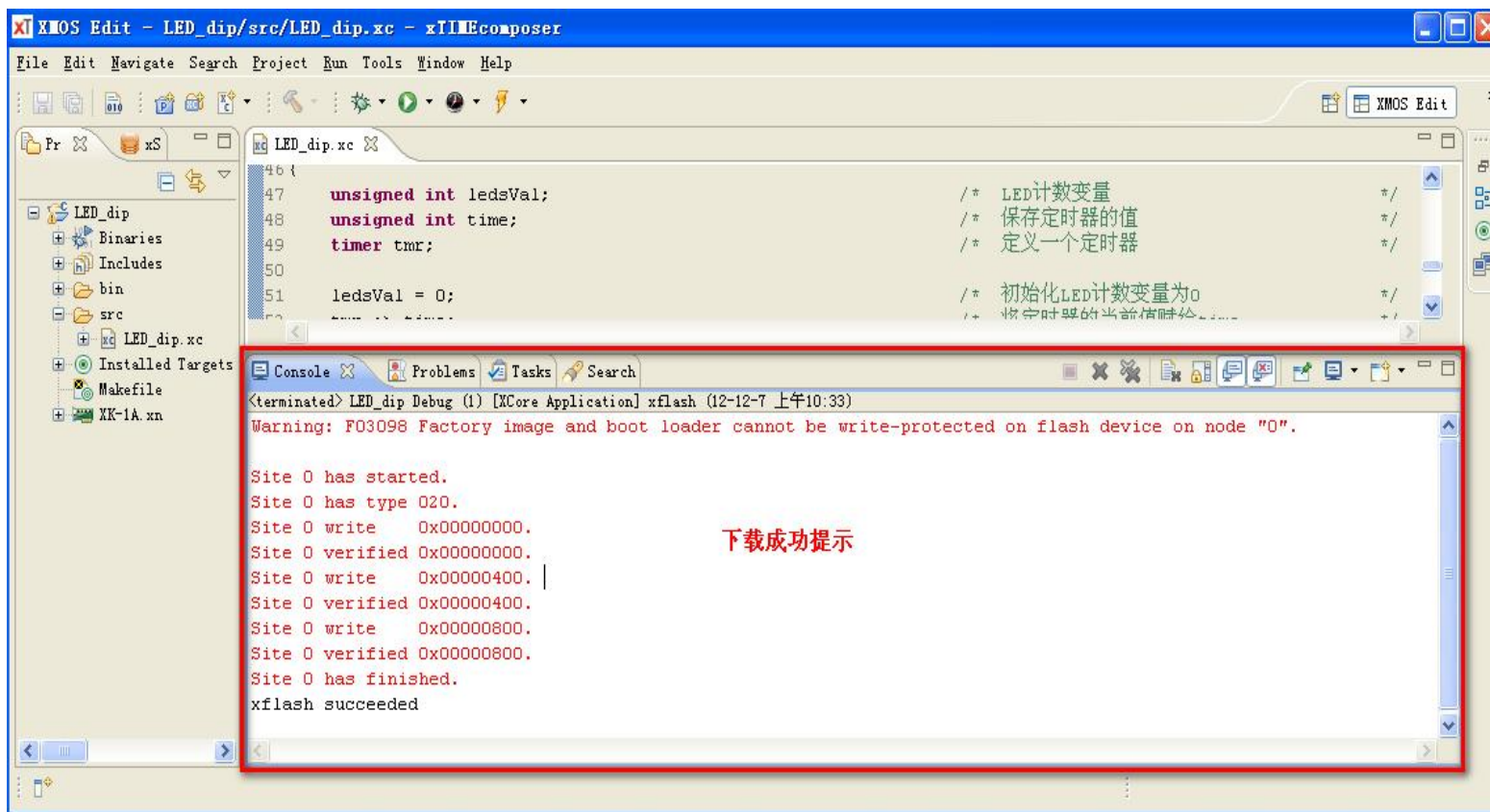
8、下载界面





xTIME composer studio—GUI

9、下载成功

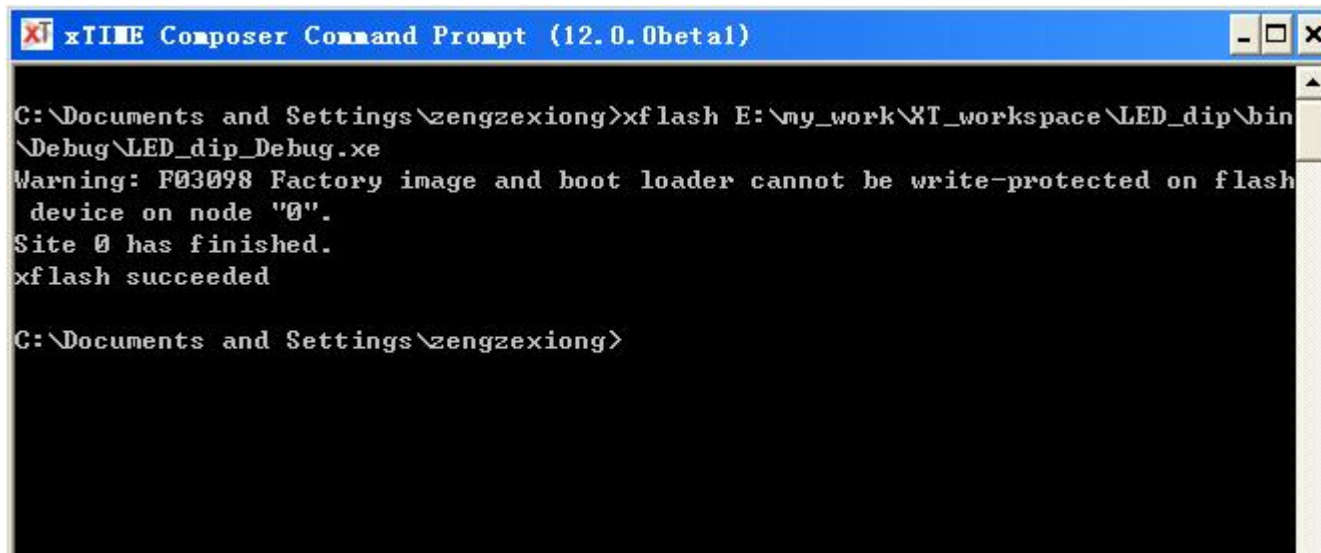




xTIME composer studio—命令行

命令行下载

命令：xflash <xefile>



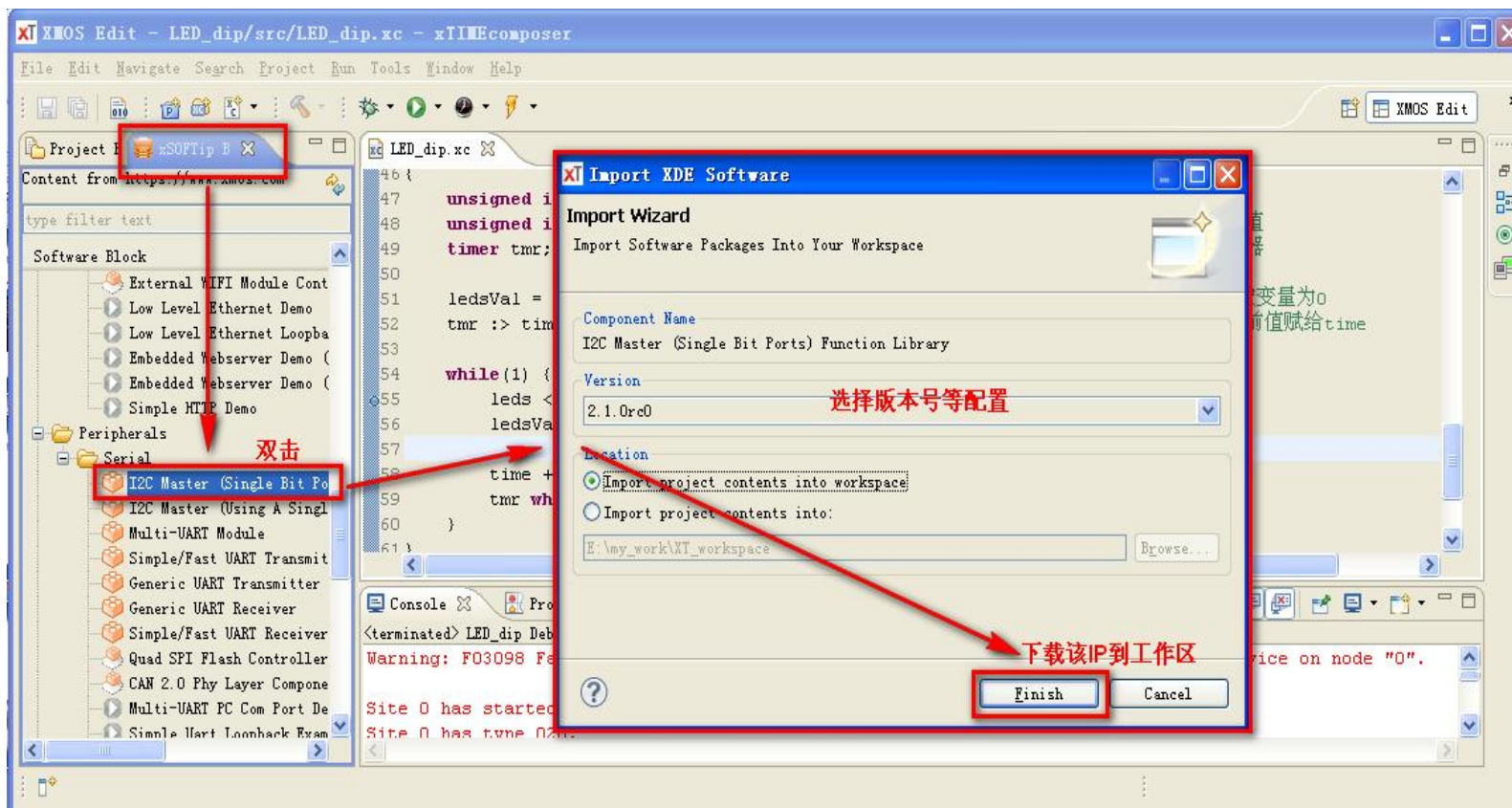
```
xTIME Composer Command Prompt (12.0.0beta1)
C:\Documents and Settings\zengzexiong>xflash E:\my_work\XT_workspace\LED_dip\bin
\Debug\LED_dip_Debug.xe
Warning: F03098 Factory image and boot loader cannot be write-protected on flash
device on node "0".
Site 0 has finished.
xflash succeeded

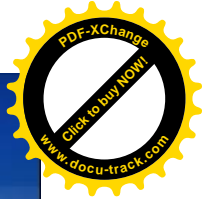
C:\Documents and Settings\zengzexiong>
```



xTIME composer studio—调用IP

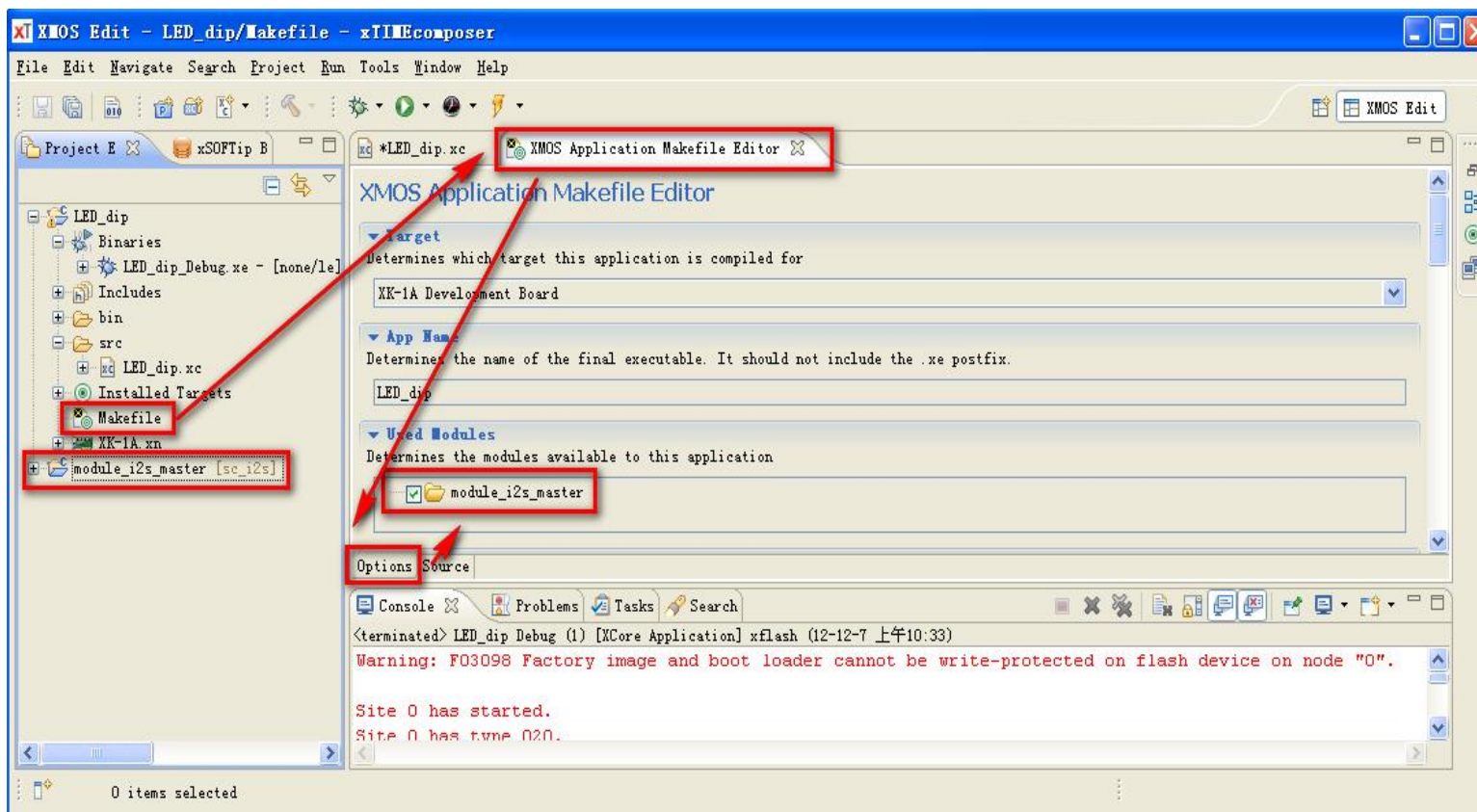
1、IP下载

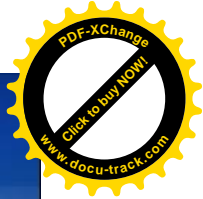




xTIME composer studio—调用IP

2、IP调用





xTIME composer studio—调用IP

2、IP调用

