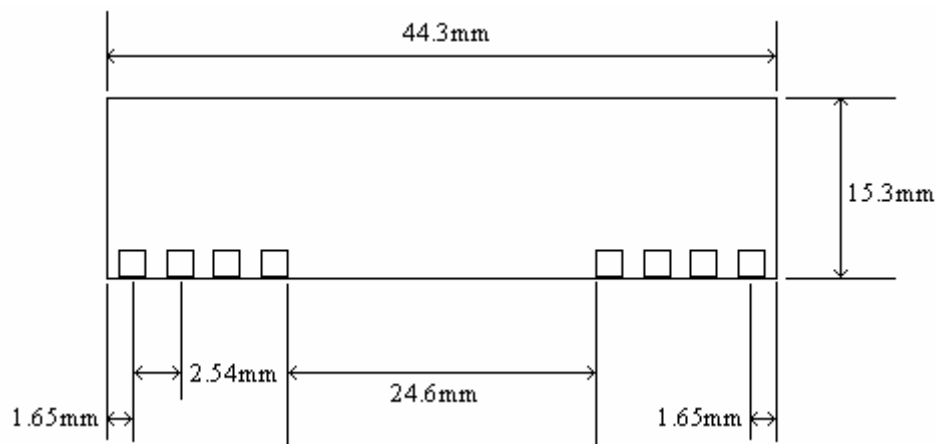


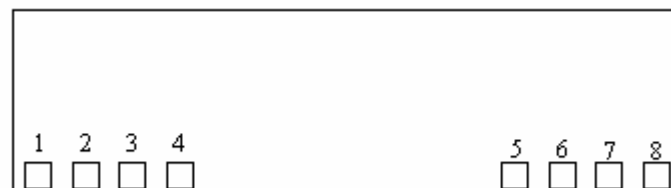
RXAS001 is an ASK receiver module of 433MHz (Super Heterodyne), with High sensitivity and low power consumption. It has the CE (Chip Enable) pin which can switch ON/OFF the whole module with 10mS turn ON time. So it can be widely applied in data communication system, like Security Systems, Home Automation Systems and RF remotes.

Product Size



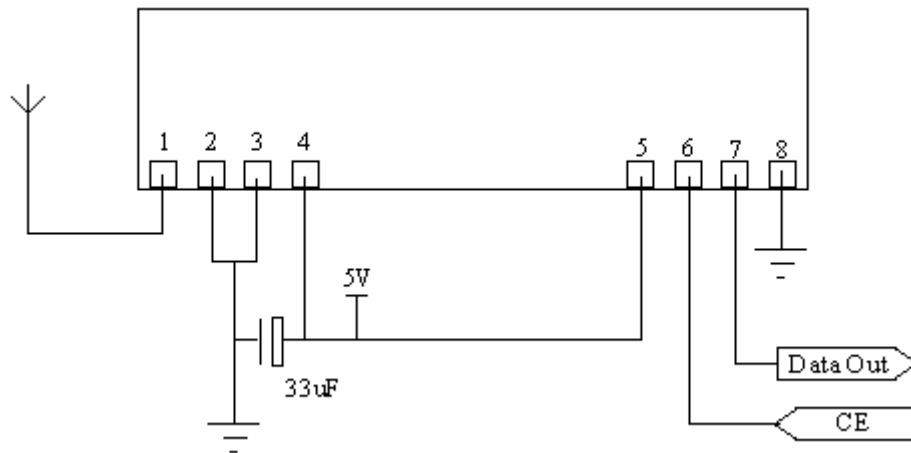
Remark: Maximum tolerance $\pm 0.5\text{mm}$

Pin Configurations



Pin	Descriptions
1	Antenna input
2	Ground
3	Ground
4	Vcc
5	Vcc
6	CE (Pull High when Operation mode)
7	Data Out
8	Ground

Typical Application Circuit



Characteristics

Characteristics	Min	TYP	MAX	Unit
Vcc Supply Voltage	4.5	5	5.5	V
Is Supply Current		5.5	6	mA
IF Frequency		10.7		MHz
Data Rate		3.5	5	Kbps
Sensitivity	-112	-110		dB
Standby DC Current (CE is Low)			1	uA
Turn On time from Standby mode			10	mS