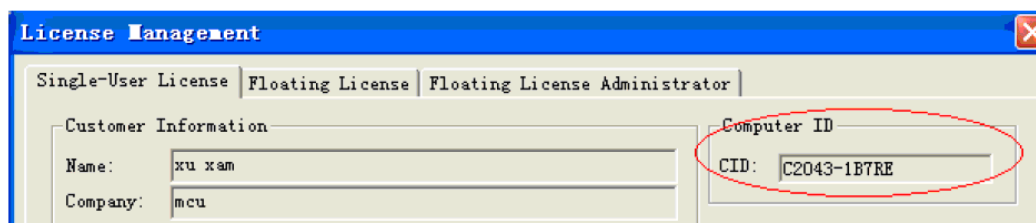
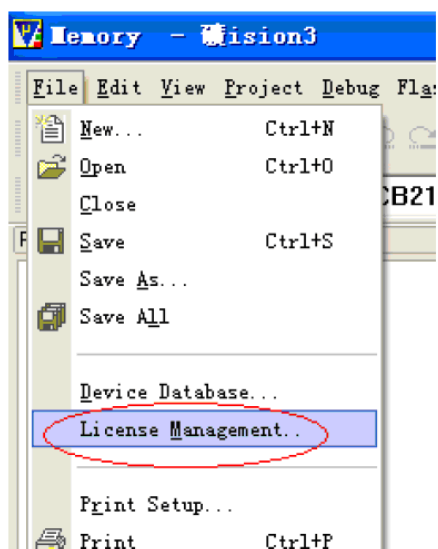


本说明仅供大家测试，商业版本请大家购买正版！

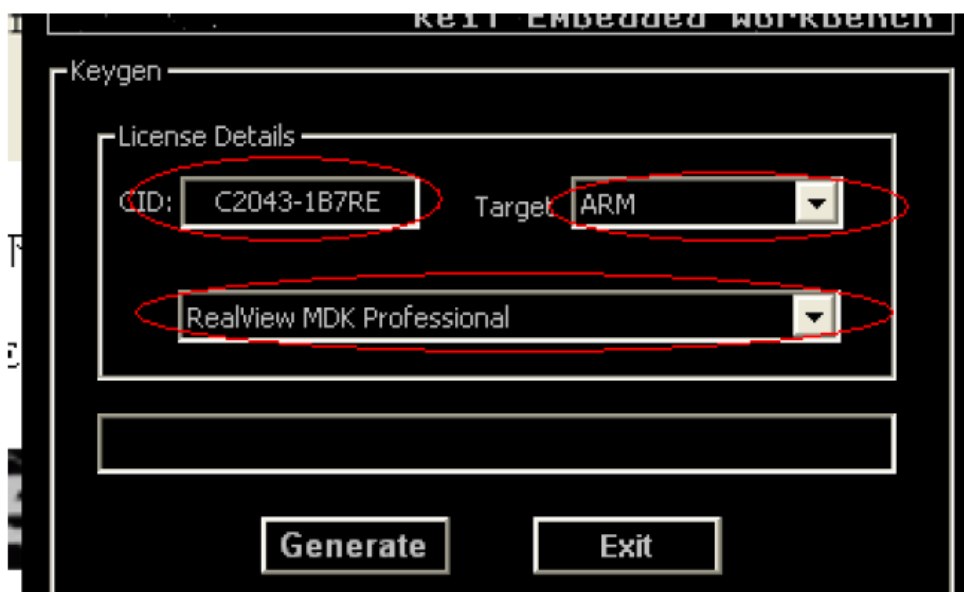
1， 安装完软件后



2， 把 CID 拷贝下来

C2043-1B7RE

然后运行 KEYGEN.EXE



把 CID 填入上图:



Target 选择 ARM

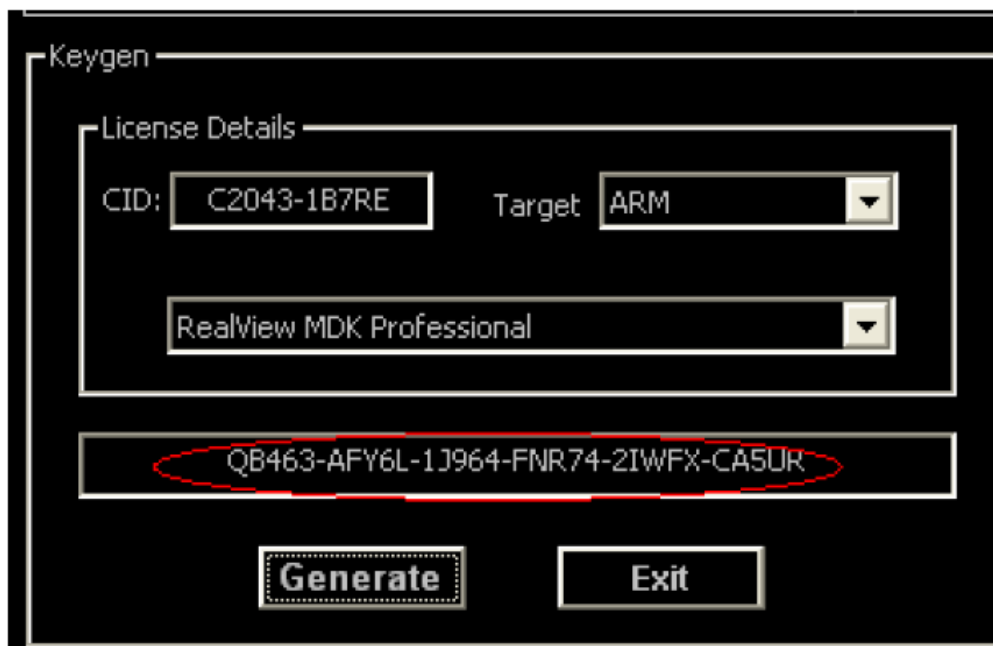


版本选专业版:

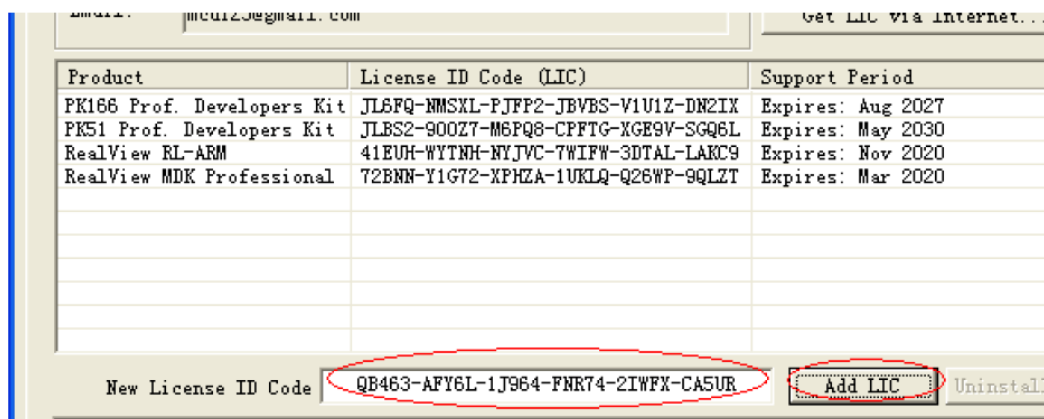


然后:

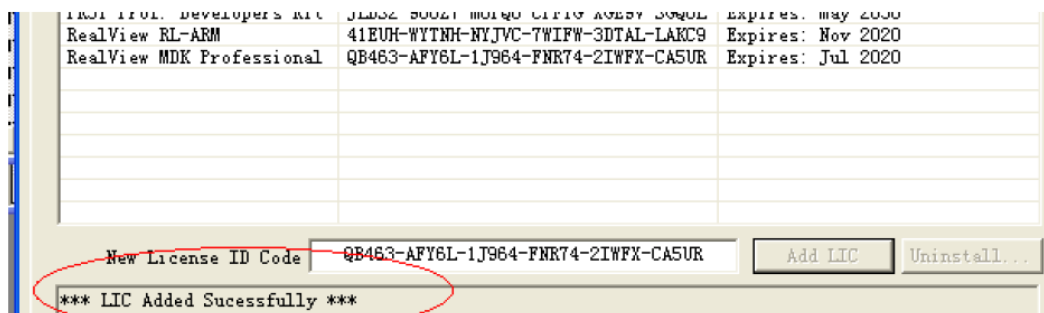
Generate



3, 把注册码填入下面的框框里面:



点 ADD LIC 后



提示: *** LIC Added Sucessfully *** 说明注册成功了。