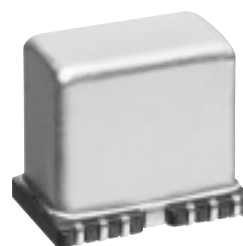


MEMS Angular Rate Sensors for Navigation

SMD Type

Type: **EWTS86N**□□□

SMD type angular rate sensor for navigation. This micro-sensor has high precision and reliability due to the full sealing around the bare chip IC and MEMS silicone based tuning fork, formed with piezo-electric thin film directly on the surface.



■ Features

- Compact, Low-height 10 mm, Low-profile 6.1 mm
- SMD type
- 5 V operating voltage (Ratio-metric output)

■ Recommended Applications

- Detects the direction of movement for car-navigation

■ Ratings

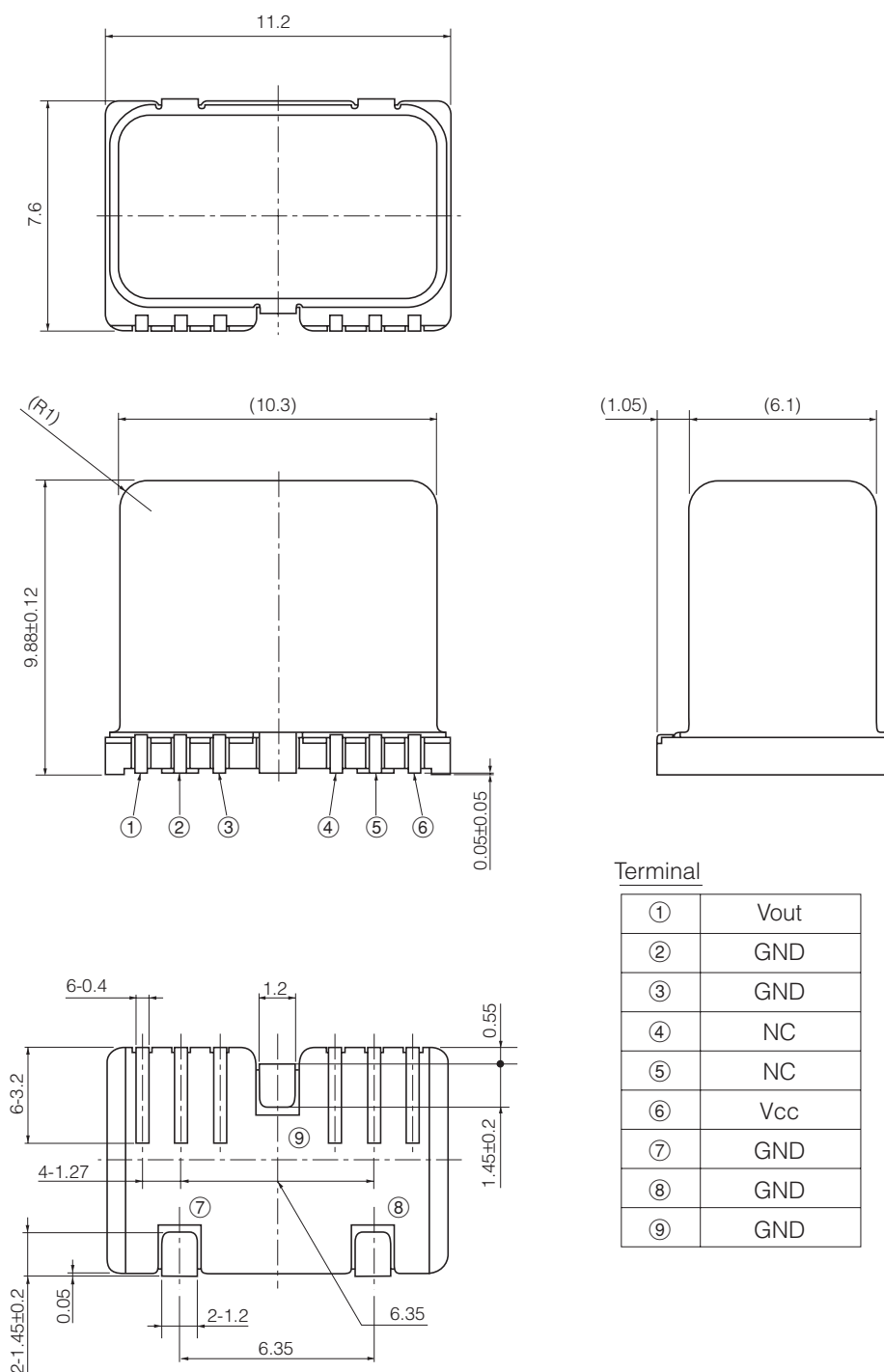
● Electrical Characteristics

| | |
|---------------------------------------|----------------------------------|
| Operating Temperature Range | −40 °C to +85 °C |
| Operating Voltage Range | 5±0.25 V |
| Zero Point Voltage (−40 °C to +85 °C) | 2.5±0.4 V |
| Sensitivity (−40 °C to +85 °C) | 25±2.5 mV/ (° ·s ^{−1}) |
| Dynamic Range | ±60 %/s |
| Frequency Response (7 Hz) | −4 dB to 0 dB |
| Output Noise | < 10 m Vp-p |

● Environmental Characteristics

| | |
|-----------------------------|---|
| Low Temperature Operation | −40 °C for 72 h |
| High Temperature Operation | +85 °C for 120 h |
| Thermal Shock | −40 °C to +85 °C for 25 cycles |
| Heat and Damp Cycling Test | −10 °C to +60 °C at 90 % RH for 5 cycles |
| Life (Operating Durability) | 2 Hz, 1×10 ⁷ cycles |

■ Dimensions in mm (not to scale)



Design and specifications are each subject to change without notice. Ask factory for the current technical specifications before purchase and/or use. Should a safety concern arise regarding this product, please be sure to contact us immediately.